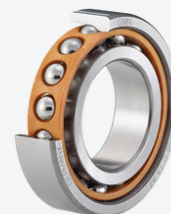


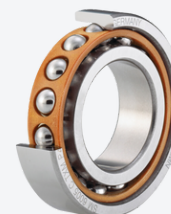
Bore Code (ID mm)	GMN 618... ISO 18	GMN 619... ISO 19	GMN 60... ISO 10	GMN 62... ISO 02	Sealing Availability
5 (5 mm)		S	S, SM	S	
6 (6 mm)		S	S, SM	S	
7 (7 mm)		S	S, SM	S	
8 (8 mm)		S	S, SM		
9 (9 mm)		S	S, SM	S	
00 (10 mm)	S	S, SM, KH	S, SM, KH	S	KH
01 (12 mm)	S	S, SM, KH	S, SM, KH	S	KH
02 (15 mm)	S	S, SM, KH	S, SM, KH	S	KH
03 (17 mm)	S	S, SM, KH	S, SM, KH	S	KH
04 (20 mm)	S	S, SM, KH	S, SM, KH	S	KH
05 (25 mm)	S	S, SM, KH	S, SM, KH	S	S, SM, KH
06 (30 mm)	S	S, SM, KH	S, SM, KH	S	S, SM, KH
07 (35 mm)	S	S, SM, KH	S, SM, KH	S	S, SM, KH
08 (40 mm)	S	S, SM, KH	S, SM, KH	S	S, SM, KH
09 (45 mm)		S, SM, KH	S, SM, KH	S	S, SM, KH
10 (50 mm)		S, SM, KH	S, SM, KH	S	S, SM, KH
11 (55 mm)		S, SM, KH	S, SM, KH	S	KH
12 (60 mm)		S, SM, KH	S, SM, KH	S	KH
13 (65 mm)		S, SM, KH	S, SM, KH	S	KH
14 (70 mm)		S, SM, KH	S, SM, KH		KH
15 (75 mm)		S, SM	S, SM		
16 (80 mm)		S, SM	S, SM		
17 (85 mm)		S, SM	S, SM		
18 (90 mm)		S, SM	S, SM		
19 (95 mm)		S, SM	S, SM		
20 (100 mm)		S, SM	S, SM		
21 (105 mm)		S, SM	S, SM		
22 (110 mm)		S, SM	S, SM		
23 (115 mm)					
24 (120 mm)		S, SM	S, SM		

All GMN bearing series are available with ceramic balls (Hybrid).



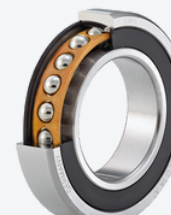
Bearing Series S

Load Capacity: ***
Speed Capability: *
Contact Angle: 15° - 25°



Bearing Series SM

Load Capacity: **
Speed Capability: **
Contact Angle: 15° - 19°



Bearing Series KH

Load Capacity: *
Speed Capability: ***
Contact Angle: 17° - 25°

Angular Contact Bearing Cage Options

Other cage materials, types, special treatments (e.g. TB, brass, Torlon, stainless steel, bronze, etc.) are available on request.

TA Cage



Material

Laminated phenolic resin

Phenolic resin with fine mesh cotton webbing

Permissible operating temperature

120°C (248°F)

Cage guidance

On outer ring

Fabrication

Machining

Application

For S, SM, KH series
General purpose

Characteristics

Low friction coefficient,
For oil and grease lubrication

TXM Cage



Material

Partially crystalline high performance plastic

PEEK (polyether ether ketone),
carbon fiber reinforced

Permissible operating temperature

250°C (482°F)

Cage guidance

On outer ring, ball retaining

Fabrication

Injection molding

Application

For S, SM series
Optimized for grease lubrication

Characteristics

Low friction coefficient,
Reduces/eliminates cage vibrations
Great mechanical, chemical & thermal stability



TXM Cage Advantages

- High resistance to wear
- Outstanding emergency operating characteristics due to favorable sliding properties and reduced abrasion
- Reduced operating temperature due to lower friction and more favorable tribology
- Constant grease lubrication due to the formation of grease reservoirs in provided cage pockets
- Long service life
- Increased cost effectiveness